



Shadesol Outdoor Shades

Stocked Fabric Range



Designed for exterior spaces, X-Weave with a 5% and 1% openness is a heavy-duty weave, making durability and versatility its strongest characteristics. In exterior settings, the fabric defies the elements by preserving view-through while blocking harsh sunlight and rain and is insect resistant. X-Weave is the perfect fabric for your Shadesol outdoor shade.

X- Weave 5%

Specifications

Width..... 3200mm
Weight..... 560gsm +/-5%
Openness.....5%
Composition.....30% Polyester, 70% PVC

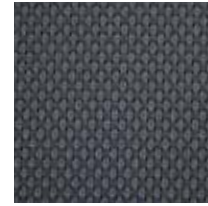
Features & Certifications



Colours



Ebony



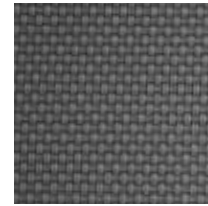
Charcoal



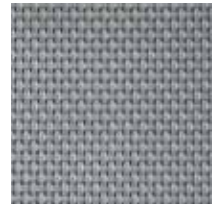
Flint



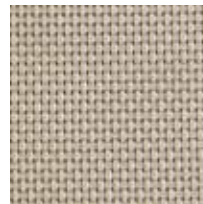
Monument



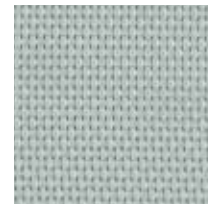
Woodland Grey



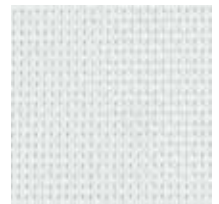
Shale Grey



Paperbark



Surf Mist



Snow

X- Weave 1%

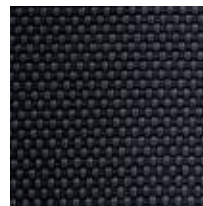
Specifications

Width..... 3200mm
Weight..... 660gsm +/-5%
Openness.....1%
Composition.....30% Polyester, 70% PVC

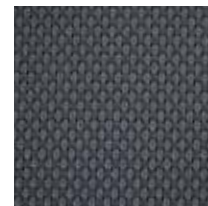
Features & Certifications



Colours



Ebony



Charcoal



Monument